



PRIME MEDICAL llc®

**CLINICALLY
DRIVEN
INNOVATION**

SURGICAL PATIENT POSITIONERS AND ACCESSORIES



CLINICALLY DRIVEN INNOVATION

At Prime Medical, LLC, we're dedicated to enhancing patient care within the operating room through our innovative patient positioning devices and unwavering commitment to patient safety. As a leading medical device manufacturer in this space, our core philosophy is rooted in a patient-first approach, striving to deliver the highest quality and affordability in every product.

Our journey is fueled by a collaborative spirit and a passion for excellence. We actively seek and value the insights of clinicians from all surgical specialties, believing that partnership and open dialogue are key to advancing patient care and safety. By integrating the expertise of healthcare professionals into our research and development process, we create products that are not only innovative but also tailored to the real-world demands of the operating room. At Prime Medical, LLC, we're more than a manufacturer; we're a dedicated partner in the quest to improve patient outcomes and redefine the standards of surgical care. Join us in shaping the future of patient positioning and safety, where every patient's wellbeing is at the heart of what we do.

SURGICAL PATIENT POSITIONERS AND ACCESSORIES

Pages 3-10 PrimePad® Series of Trendelenburg Pads and Kits

Page 11-15 Anesthesia Positioners

Pages 16-20 Orthopedic and Spine Positioning Accessories

Pages 21-23 Pediatric Positioners

Pages 24-27 Patient Safety Accessories

PRIMEPAD® SERIES OF TRENDELENBURG PADS AND KITS

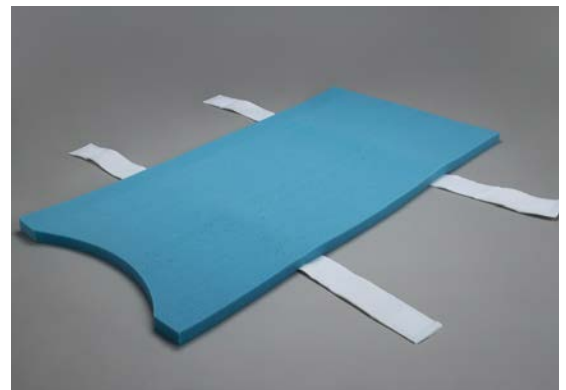
- For use in any procedure that requires Trendelenburg, Reverse Trendelenburg, or lateral positioning.
- Provides reliable support and stability with a next-generation, innovative, high-performance polyurethane foam pad.
- PrimePad® Series material offers immediate rebound, anti-skid properties, enhanced breathability, and increased patient support.
- PrimePad® material is not temperature sensitive and dissipates heat faster than memory foam.
- PrimePad® Series material provides up to 4 times greater peak pressure reduction compared with memory foam.
- Single patient use due to the dissipation of static properties with each use.
- Single patient use to aid in infection prevention.
- Compatible with patient warming devices.
- Single-packed in compressed format which lowers shipping costs and reduces storage space requirements.
- Available in kits that include: Patient Body Straps, Disposable Draw Sheets, three different Arm Tucking/Protection options, and Head Cradles.
- Available in Wing format with integrated arm tucking and protection.
- All PrimePadPlus codes are available with the original PrimePad® material. (Ex. PrimePadPlus-1 is also available as PrimePad-1)

PrimePadPlus-1



Case Pack: 10

PrimePadPlus-1S



Case Pack: 10



THE PRIMEPAD® SERIES FOAM IS CertiPUR-US® CERTIFIED!

We are proud to announce that the foam in our PrimePad® Series is now CertiPUR-US® certified, crafted with a commitment to responsible sourcing and minimized environmental impact! By choosing materials certified for low VOC emissions (less than 0.5 ppm) and made without harmful substances like heavy metals and ozone depleters, we prioritize a cleaner, safer supply chain from start to finish. This certification ensures that PrimePad® Series foam not only meets high-performance standards but also aligns with and supports environmentally innovative healthcare practices worldwide.

THE PRIMEPAD® SERIES PROVIDES BIODEGRADABILITY!

We are proud to announce that our PrimePad® and PrimePad® Plus pad materials reflect environmental considerations, in addition to their compact and efficient packaging footprint. Our commitment to sustainability has led us to rigorously test these products under the ASTM-D5511 standard, demonstrating significant biodegradability in specific laboratory conditions. It's important to us that our customers are informed about the precise benefits and characteristics of our products, including the fact that PrimePad® and PrimePad® Plus pad materials achieved 73% and 62% biodegradation in just 25 days, respectively, under these conditions.

The Federal Trade Commission requires that biodegradable claims “be qualified clearly and prominently to the extent necessary to avoid deception about the rate and extent of degradation.”¹ We believe in transparency and in providing our customers with reliable, evidence-based information so that you can make choices that align with your values. Sharing these results is not just about showcasing our PrimePad® Series; it's about contributing to a more sustainable future together.

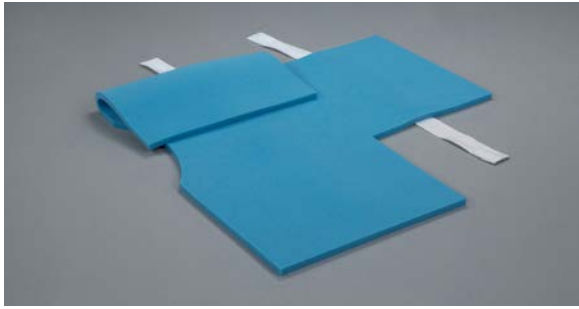
1. Federal Trade Commission [Green Guides](#) 16 CFR Part 260.8

INSTRUCTIONS FOR USE

- First, ensure the O.R. Mattress is secured to the table.
- O.R. Mattress must be clean and dry. Place pad on the table, aligning the pad and mattress perineal cutouts. PrimePads® are designed to provide maximum O.R. Mattress coverage.
- Nothing should be placed between O.R. mattress and PrimePad.
- MAXIMUM patient contact with the pad is key to clinical efficacy.
- Ensure the Sacrum, Torso and Shoulders are in DIRECT contact with the pad.
- Minimize lift/draw sheet width to maximize patient contact with the pad.
- Prefer foam or gel donuts over pillows for intra-operative head positioning, as patients' shoulders often rest on pillow instead of the pad. If using pillows, ensure shoulders are in contact with pad.
- Pads with Table Rail Straps Only: The built-in table rail straps should be on the bottom side of the pad. Slide the straps downward between the rail and the table, bring them back up and around the outside of the rail, and affix the strap back upon itself securely. Discard after use.

Not made with natural rubber latex





PRIMEPAD® SERIES OF TRENDELENBURG PADS WITH INTEGRATED ARM TUCKING AND PROTECTION

- Provides all of the features and benefits of our PrimePad® Series, with the added feature of integrated arm tucking and protection Wings.
- The integrated arm tucking and protection offers patient safety and clinical staff ease of use and convenience in patient positioning for lithotomy/steep Trendelenburg.
- The Wing material can be used to either fully encapsulate the patients' arms, or they can be used to simply pad the patients' arms, depending upon hospital protocol.
- Any excess or unnecessary Wing material can be removed by simply tearing it, and it easily tears in a linear plane.
- Allows the Anesthesia provider easy access to the IV site, and Wing material allows for channeling of IV tubing and pulse oximetry cables by tearing a window or slit in the Wing material.
- Eliminates the need to use a draw sheet for arm tucking and allows for 100% patient contact with the pad.
- 2 options with different widths in arm tucking/ protection material:

PrimePadPlus-W1 Wing dimensions:
61 cm long x 61 cm wide

PrimePadPlus-W2 Wing dimensions:
61 cm long x 41 cm wide

PrimePadPlus-W2



Case Pack: 4



For PrimePads® with Integrated Arm Tucking and Protection:

INSTRUCTION FOR USE

Follow the Instructions For Use for the PrimePad® Series of Trendelenburg Pads for installation of the pad on the O.R. Mattress.

Once the patient is properly positioned on the PrimePad®, a draw sheet is not required to tuck and protect the arms. To allow for 100% patient-to-pad contact, remove the draw sheet and utilize the Wing material to tuck/protect the arms.

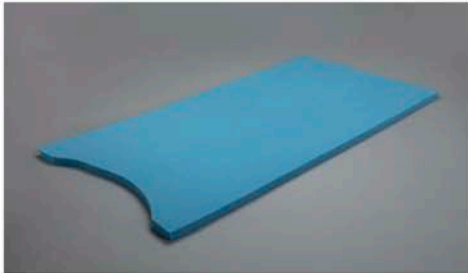
To utilize the Wing material for arm tucking and protection, bring the full length of the pad to the patient's side to determine how much length is needed. If excess Wing material needs to be removed, simply tear off the un-needed material. The material tears in linear plane, and tearing reduces the need for scissors.

One method for utilizing the Wing material is to have a team member on each side of patient. One team member will slightly "log roll" the patient toward them, while the other team member wraps the patient's arm in the Wing and then places the end of the Wing under the patient's torso. Repeat the same steps on the opposite side.

The PrimePad® material's flexibility and high coefficient of static friction provides secure arm tucking and protection without the need for external accessories such as Velcro, straps and draw/lift sheets.

Not made with natural rubber latex

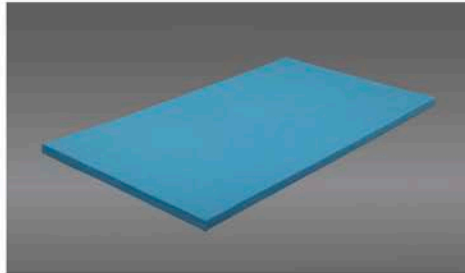




PRIMEPADPLUS-1

Case Pack: 10

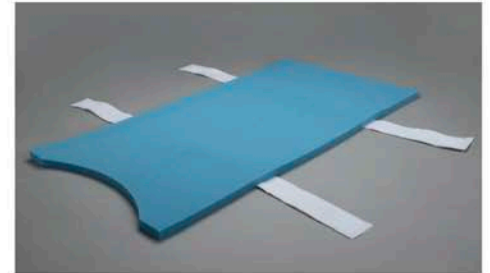
Pad, 112 cm x 58 cm x 2.54 cm



PRIMEPADPLUS-1-3422

Case Pack: 10

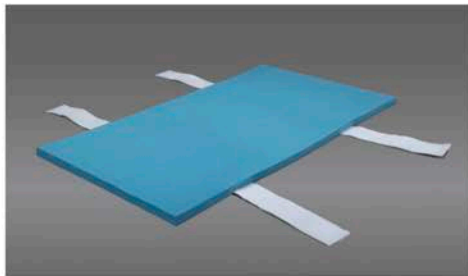
Pad, 86 cm x 56 cm x 2.54 cm



PRIMEPADPLUS-1S

Case Pack: 10

Pad w/ rail straps, 112 cm x 58 cm x 2.54 cm



PRIMEPADPLUS-1S-3422

Case Pack: 10

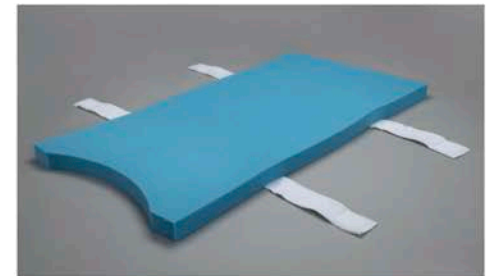
Pad w/rail straps, 86 cm x 56 cm x 2.54 cm



PRIMEPADPLUS-2

Case Pack: 4

5.08 cm Pad, 112 cm x 58 cm x 5.08 cm



PRIMEPADPLUS-2S

Case Pack: 4

Pad w/ rail straps, 112 cm x 58 cm x 5 cm



PRIMEPADPLUS-3

Case Pack: 4

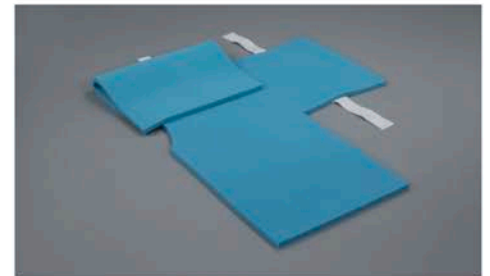
Ramped 2.54 cm to 5.08 cm Pad, 112 cm x 58 cm x 5.08 cm



PRIMEPADPLUS-3S

Case Pack: 4

Ramped 2.54 cm to 5.08 cm Pad w/ rail straps, 112 cm x 58 cm x 5.08 cm

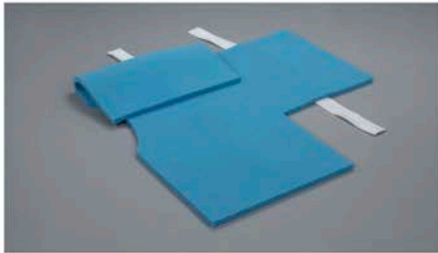


PRIMEPADPLUS-W1

Case Pack: 4

Pad w/ rail straps, 112 cm x 58 cm x 2.54 cm

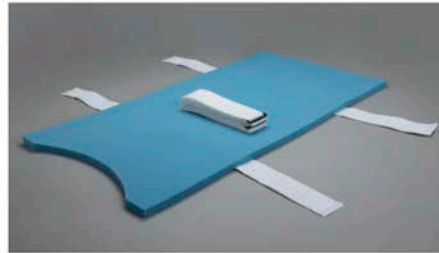
Integrated 61 cm x 61 cm arm tucking/ protection, perineal cutout



PRIMEPADPLUS-W2

Case Pack: 4

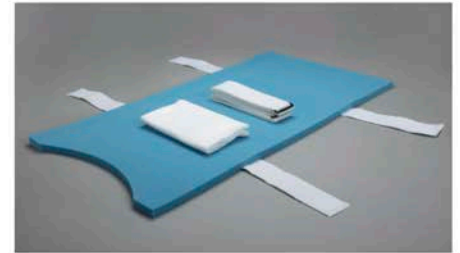
- ▶ Pad w/ rail straps, 112 cm x 58 cm x 2.54 cm
- ▶ Integrated 61 cm x 41 cm arm tucking/ protection



PRIMEPADPLUS-K1

Case Pack: 10

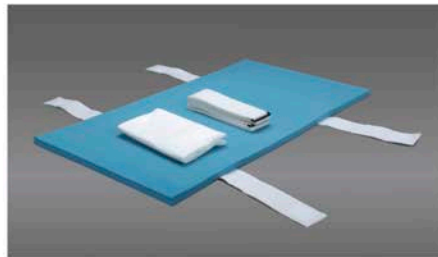
- ▶ Pad w/ rail straps, 112 cm x 58 cm x 2.54 cm
- ▶ Single Body Strap Set



PRIMEPADPLUS-K2

Case Pack: 10

- ▶ Pad w/ rail straps, 112 cm x 58 cm x 2.54 cm
- ▶ Single body strap set
- ▶ Disposable draw sheet



PRIMEPADPLUS-K2-3422

Case Pack: 10

- ▶ Pad w/ rail straps, 86 cm x 56 cm x 2.54 cm
- ▶ Single body strap set
- ▶ Disposable draw sheet



PRIMEPADPLUS-K6

Case Pack: 4

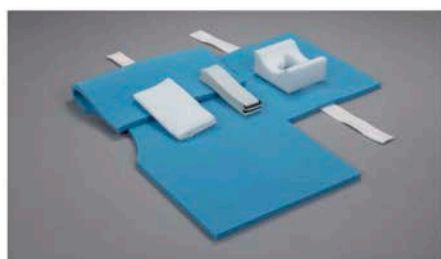
- ▶ Pad w/ rail straps, 112 cm x 58 cm x 2.54 cm
- ▶ Single body strap set
- ▶ Disposable draw sheet
- ▶ Arm tucking sleeves



PRIMEPADPLUS-K7

Case Pack: 3

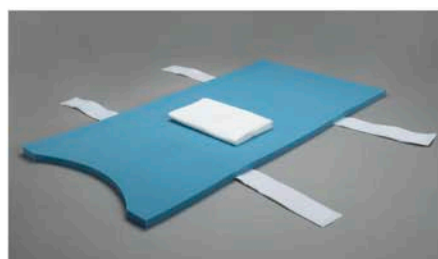
- ▶ Pad w/ rail straps, 112 cm x 58 cm x 2.54 cm
- ▶ Single body strap set
- ▶ Disposable draw sheet
- ▶ Arm tucking sleeves
- ▶ Adult head cradle



PRIMEPADPLUS-K8

Case Pack: 3

- ▶ Pad w/ rail straps, 112 cm x 58 cm x 2.54 cm
- ▶ Integrated arm tucking/ protection 61 cm x 41 cm
- ▶ Single body strap set
- ▶ Disposable draw sheet
- ▶ Adult head cradle



PRIMEPADPLUS-K9

Case Pack: 10

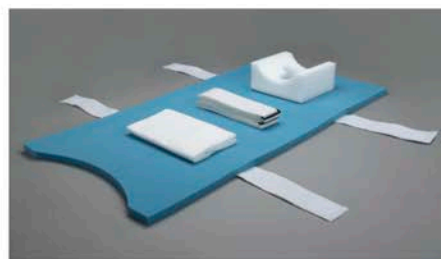
- ▶ Pad w/ rail straps, 112 cm x 58 cm x 2.54 cm
- ▶ Disposable draw sheet



PRIMEPADPLUS-K10

Case Pack: 4

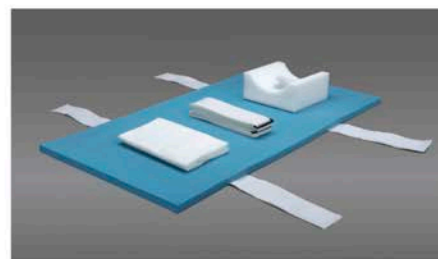
- ▶ Pad w/ rail straps, 112 cm x 58 cm x 5.08 cm
- ▶ Single Body Strap Set
- ▶ Disposable draw sheet



PRIMEPADPLUS-K12

Case Pack: 3

- ▶ Pad w/rail straps, 112 cm x 58 cm x 2.54 cm
- ▶ Single body strap set
- ▶ Disposable Draw Sheet
- ▶ Adult Head Cradle



PRIMEPADPLUS-K12-3422

Case Pack: 3

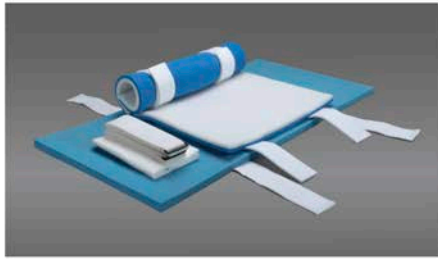
- ▶ Pad w/rail straps, 86 cm x 56 cm x 2.54 cm
- ▶ Single body strap set
- ▶ Disposable Draw Sheet
- ▶ Adult Head Cradle



PRIMEPADPLUS-K14

Case Pack: 8

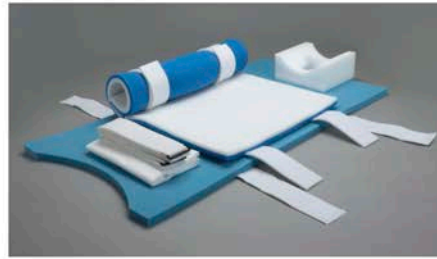
- ▶ Pad w/rail straps, 112 cm x 58 cm x 2.54 cm
- ▶ Single body strap set
- ▶ Disposable Draw Sheet
- ▶ Arm Protector Pair



PRIMEPADPLUS-K14-3422

Case Pack: 8

- ▶ Pad w/rail straps, 86 cm x 56 cm x 2.54 cm
- ▶ Single body strap set
- ▶ Disposable Draw Sheet
- ▶ Arm Protector Pair



PRIMEPADPLUS-K15

Case Pack: 3

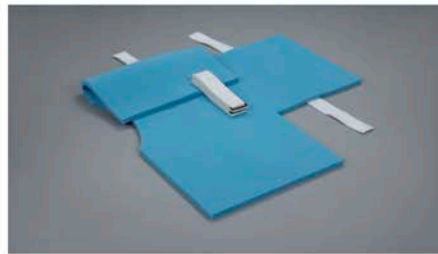
- ▶ Pad w/rail straps, 112 cm x 58 cm x 2.54 cm
- ▶ Single body strap set
- ▶ Disposable Draw Sheet
- ▶ Arm Protector Pair
- ▶ Adult Head Cradle



PRIMEPADPLUS-K15-3422

Case Pack: 3

- ▶ Pad w/rail straps, 86 cm x 56 cm x 2.54 cm
- ▶ Single body strap set
- ▶ Disposable Draw Sheet
- ▶ Arm Protector Pair
- ▶ Adult Head Cradle



PRIMEPADPLUS-K16

Case Pack: 4

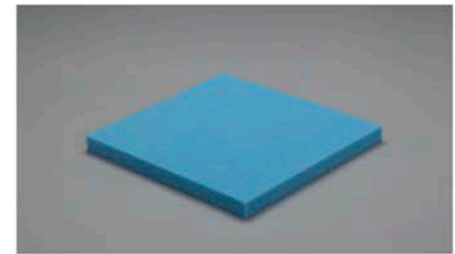
- ▶ Pad w/rail straps, 112 cm x 58 cm x 2.54 cm
- ▶ Integrated 61 cm x 41 cm arm tucking/protection
- ▶ Single Body Strap Set



PRIMEPADPLUS-PED

Case Pack: 10

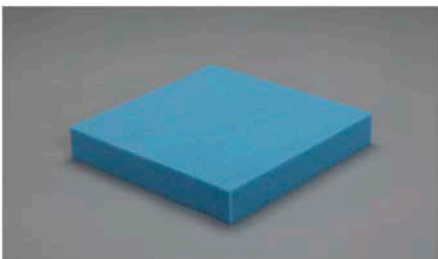
- ▶ Pediatric Pad, 61 cm x 51 cm x 2.54 cm



PRIMEPADPLUS-SQ1

Case Pack: 25

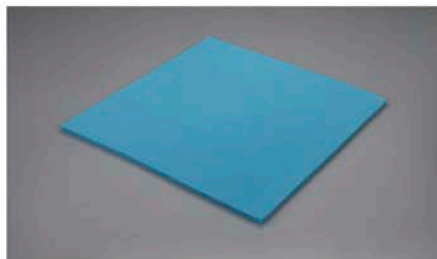
- ▶ Square Positioning Foam, 30.5 cm x 30.5 cm x 2.54 cm



PRIMEPADPLUS-SQ2

Case Pack: 25

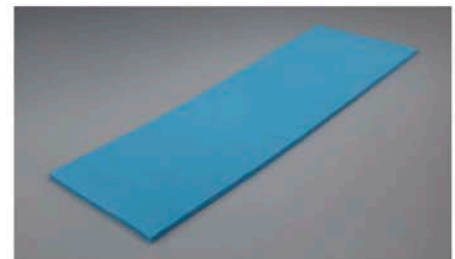
- ▶ Square Positioning Foam, 30.5 cm x 30.5 cm x 5.08 cm



PRIMEPADPLUS-BBO

Case Pack: 6

- ▶ Bean Bag Overlay, 101.6 cm x 96.52 cm x 2.54 cm
- ▶ U.S. Patent #10,688,004



PRIMEPADPLUS-CVP

Case Pack: 4

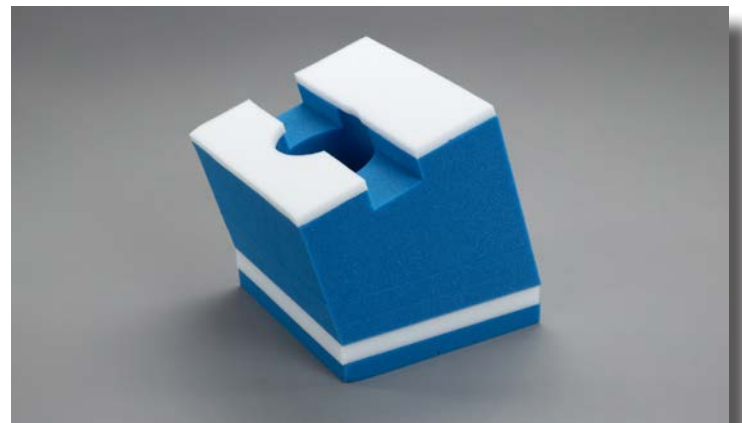
- ▶ Cardiovascular Pad, 183 cm x 58 cm x 2.54 cm



LATERAL POSITIONING PILLOW

- ▶ Properly aligns the patient's cervical spine.
- ▶ Channel protects the eye while allowing constant monitoring.
- ▶ Center cutout protects the ear.
- ▶ Pillow angle evenly distributes the weight of the head.
- ▶ Pillow height easily adjusts by removing one or both bottom layers to accommodate each patient.
- ▶ Provides consistency in lateral patient positioning.

LHP-100
US Patent # 8,516,639



Case Pack: 8

Dimensions:
27 cm x 25 cm x 27 cm
(Height adjusts from 16.5 cm to 27 cm)



Providing a Better Way

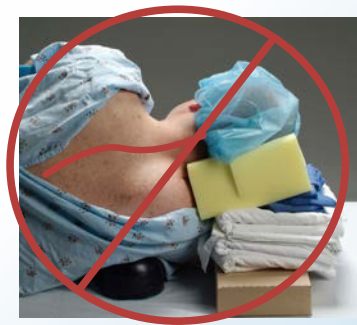
Consistency and standardization are the keys to patient safety when placing patients in the lateral position. Prime Medical's Lateral Positioning Pillow supports the patient's head for safe, reliable lateral positioning.

This two-part pillow has a firm, adjustable base that is anatomically angled to maintain the cervical spine in a neutral position. The soft-top layer conforms to the patient's face and evenly distributes the weight of the head throughout the lateral procedure.

The central cutout keeps the ear free of pressure. The patented eye channel allows the provider to constantly monitor the eye pressure to ensure it is free from pressure that could result in catastrophic injury.

The tear-away bottom layers afford the provider the ability to adjust the pillow to patients of varying sizes.

Not made with natural rubber latex



A] Improvised Positioning



B] Improper Alignment



C] Proper Positioning

Reliable Spine Alignment

Careful measurements of patients in the lateral position have demonstrated that the width of the shoulders compared to the hips and use of an axillary roll creates a natural angle of the thoracic and cervical spine relative to the horizontal plane of the surgical bed. Prime Medical's patented Lateral Positioning Pillow reproduces this angle consistently and reliably. Neutral thoracic and cervical spine alignment minimizes the risk of brachial plexus injuries.

Gone are the days of improvised support of the head in patients positioned laterally!

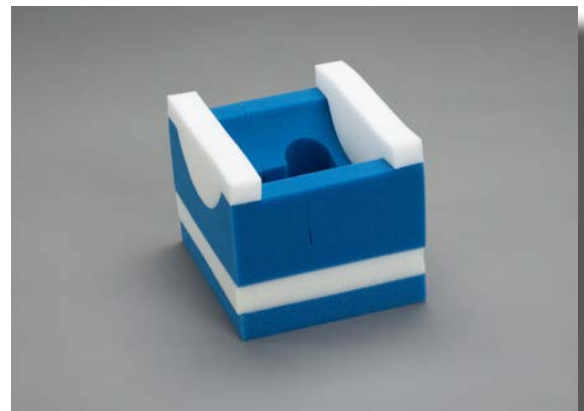


UNIVERSAL SUPINE/PRONE POSITIONING PILLOW

- ▶ Properly aligns cervical spine in prone position.
- ▶ Use for induction and positioning prone. Adjustable with easy tear-away layers.
- ▶ Soft foam provides support and comfort.
- ▶ Combines the supine induction head cradle and the prone pillow in a single positioner.
- ▶ Trach slits on BOTH sides of the positioner.

UPSP100

US Patent # 9,138,087



Case Pack: 10

Dimensions:

23 cm x 20 cm x 16.5 cm

(Height adjusts from 10 cm to 16.5 cm)



Providing a Better Way

The bottom two layers can be removed so the pillow can be used in the supine position for induction. This all-in-one characteristic replaces the need for two pillows, and provides cost savings to both hospital and patient.

Instructions for Use

Key issues when positioning patients prone are maintaining a neutral cervical spine, and protecting the face and eyes. Prime Medical's Universal Prone Positioning Pillow addresses both of these. This two-part adjustable pillow allows the Anesthesia Provider to adjust the height of the pillow to accommodate patients of different sizes, as well as the use of varying chest support systems.

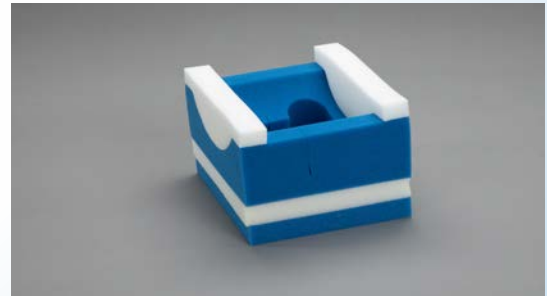


The ability to decrease the height of the pillow prevents hyper extension of the cervical spine when less bulky chest positioning systems are required. The firm base provides a stable, reliable platform while the soft inserts protect the face and eyes from pressure-related injuries.

Not made with natural rubber latex



Now one pillow....



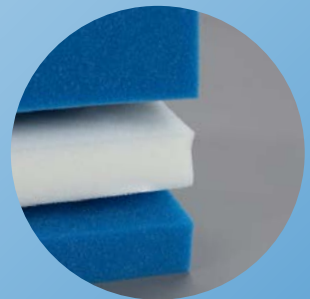
...does the job of two.

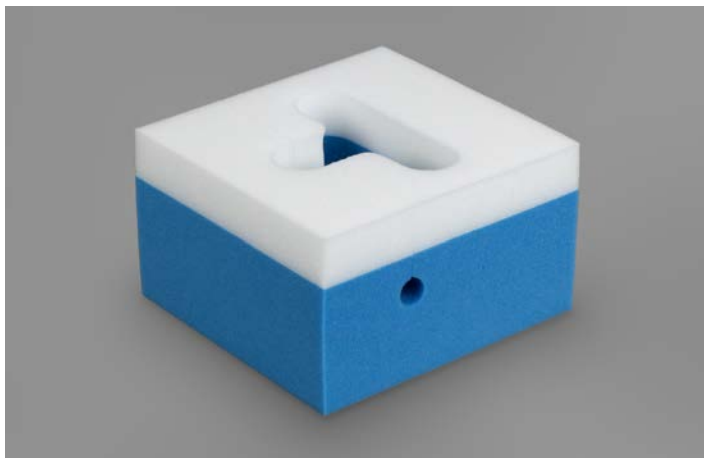


Cost Savings

The bottom two layers can be removed so the pillow can be used in the supine position for induction. This all-in-one characteristic replaces the need for two separate pillows, thus providing cost savings to both the hospital and patient.

Convenient
adjustment
of height with
two tear away
layers.

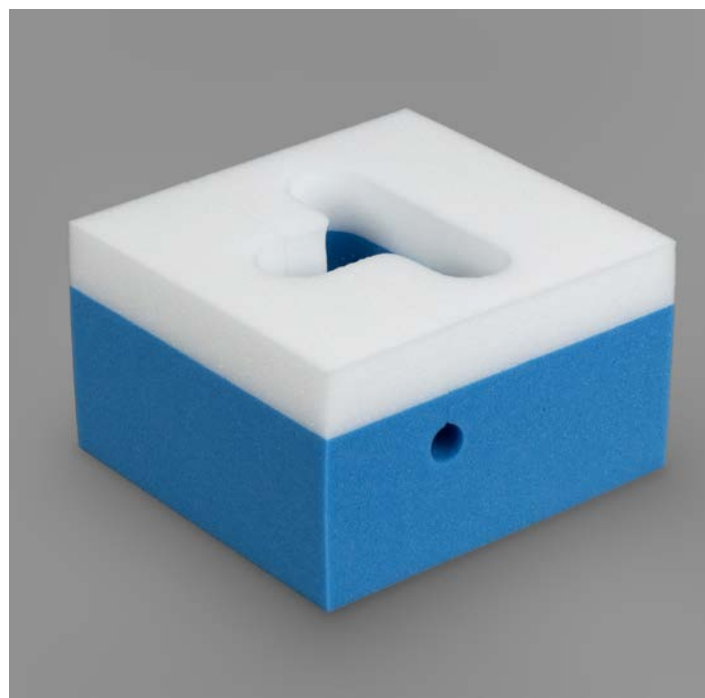




PRONE HEAD POSITIONER W/ DUAL TRACH SLIT

The Prone Head Positioner (#PHP100) is indicated for all surgical procedures that require the Prone patient position.

- ▶ Measures 25.4 cm x 25.4 cm x 15.88 cm and offers 3.81 cm thick soft cosmetic foam top layer to greatly reduce the risk of skin injury, even in longer duration procedures.
- ▶ The Prone Head Positioner provides a 12.07 cm base layer with optimal density for patient support.
- ▶ Dual trach slits offer anesthesia providers maximum flexibility and ease of use.



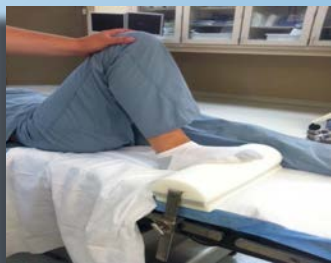
Case Pack: 10

Dimensions:
25.4 cm x 25.4 cm x 15.88 cm



UNIVERSAL AXILLARY/POSITIONING ROLL

- ▶ Unique, adjustable single-patient-use foam positioner for a wide variety of surgical applications.
- ▶ Eliminates risk of cross-contamination and dermatological reaction to cleaning residue.
- ▶ Provides a superior alternative to rolled towels, bandages, blankets, sheets, I.V. bags, etc.
- ▶ Density of foam provides support with reduced risk of pressure-related tissue injury.
- ▶ Texture of foam decreases patient slippage.
- ▶ Flat bottom increases stability.
- ▶ Removable layers provide adjustability.
- ▶ Slot in the side will accommodate a 90-degree angle iron that can attach to a table rail clamp for added stability during knee procedures.



AAR100

US Patent # 9,161,642



Case Pack: 10

Dimensions:

32 cm long x 11 cm wide x 12 cm high
(2 cm tear-away layers)



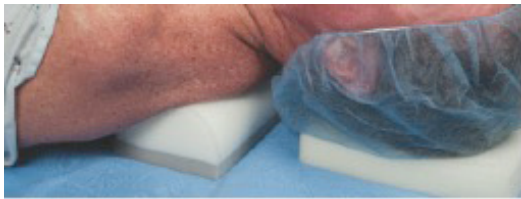
Providing a Better Way

Consistency and standardization are the keys to patient safety when positioning patients for surgical procedures. Prime Medical's Universal Axillary/Positioning Roll safely and reliably supports the patient in multiple positions, bringing standardization to positioning for a wide variety of surgical procedures.

The design, density and texture of the foam provide stability and support, while the removable bottom layers allow the clinician to adapt the AAR100 to the patient and procedure. Use of the AAR100 eliminates the need for rolled towels, blankets, I.V. bags, etc., which are not positioning devices, or gel rolls which require cleaning between surgical cases.

Because the AAR100 is single-patient-use, the risk of cross-contamination from reusable positioners is eliminated. So, too, is the risk of a dermatological reaction to a cleaning solution residue. By removing the need for a cleaning protocol, patient safety is enhanced and OR time is saved.

The AAR100 is your consistent, safe and universal surgical positioning solution.



Horizontal Scapular Roll: Neck surgery - thyroidectomy, parathyroidectomy, radical neck dissection, internal jugular vein central line placement.

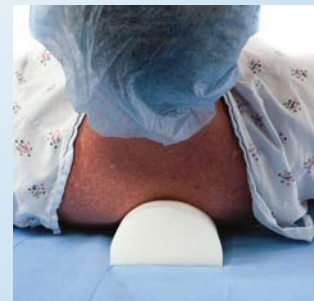
Not made with natural rubber latex



Application Examples



Axillary Roll: Lateral positioning - CV/thoracic, orthopaedic, nephrectomy



Vertical Scapular Roll: Median sternotomy; Subclavian central line placement



Foot/Ankle Prop: Podiatric surgery



Left Lateral Tilt: Cesarean section



CHEST ROLL PAIR

- ▶ Chest Rolls provide Standardization in Prone positioning requiring chest rolls by eliminating the need for rolled towels and other improvised positioning methods.
- ▶ Chest Rolls are adjustable in both length and height by removing the end and bottom portions to provide customized support for a wide variety of patient body habitus.
- ▶ Chest Rolls are single patient use to reduce the risk of cross-contamination and help increase room turnover by eliminating cleaning requirements.
- ▶ Chest Rolls offer ease of use for Clinical Staff by providing a lightweight, customizable and bacteriostatic positioning solution.

Not made with natural rubber latex

CR100



Case Pack: 7 Pair

Dimensions:

50.8 cm long x 12.7 cm wide x 12.7 cm high
(10.16 cm tear-away end to shorten it to 40.64 cm long)



BEAN BAG OVERLAY

- Provides skin protection and pressure reduction for Lateral positioning in conjunction with all types of bean bag devices.
- Made of the same next-generation, high-performance polyurethane foam as found in the PrimePad® Series Trendelenburg Pads, reverse-Trendelenburg and lateral positioning.
- Dimensions of 101.6 cm x 96.52 cm x 2.54 cm covers entire bean bag surface and allows maximum overlay coverage.
- Helps protect against nerve injury, compartment syndrome and pressure ulcers.
- Stored in compressed format which lowers shipping costs and reduces storage space requirements.

Not made with natural rubber latex

PrimePadPlus - BBO



U.S. Patent #10,688,004

Case Pack: 6

Dimensions:
101.6 cm x 96.52 cm x 2.54 cm





ARM TUCKING SLEEVE

- ▶ Sleeves provide 360° padded protection for the arm and hands.
- ▶ Sleeves allow easy access to IV sites for Anesthesia providers.
- ▶ Sleeves easily accommodate blood pressure cuffs and IV tubing.
- ▶ Sleeves are single-patient use and are latex free.

Not made with natural rubber latex



ATS100



Case Pack: 3 pair

Dimensions:
55.88 cm long with 3.81 cm thick foam

PEDIATRIC POSITIONERS



Child Head Cradle

CHC100
Case Pack: 36



- Single patient use child head cradle for anesthesia positioning, dimensions 17.75 cm x 15.85 cm x 8.9 cm.
- Soft foam with appropriate density provides support and reduced pressure to the patient.
Not made with natural rubber latex



Pediatric Donut

PD100
Case Pack: 48



- Single patient use 17.8 cm x 3.8 cm donut for anesthesia positioning.
- Soft foam with appropriate density provides support and reduced pressure to the patient.
Not made with natural rubber latex

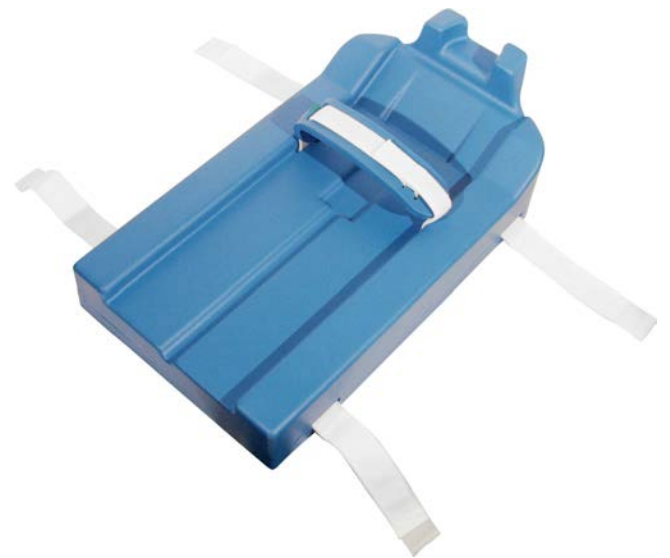




SECURE360°

PEDIATRIC PRONE POSITIONER

- Provides 360-degree access and visualization of the infant's skull.
- Provides stable, reliable support throughout surgery.
- Significantly reduces patient positioning time.
- No need to reposition child during surgery.
- Intended for use with pediatric patients, specifically infants 6-18 months of age.



Case Pack: 1

PATENT US # 8,584,280

Providing a Better Way

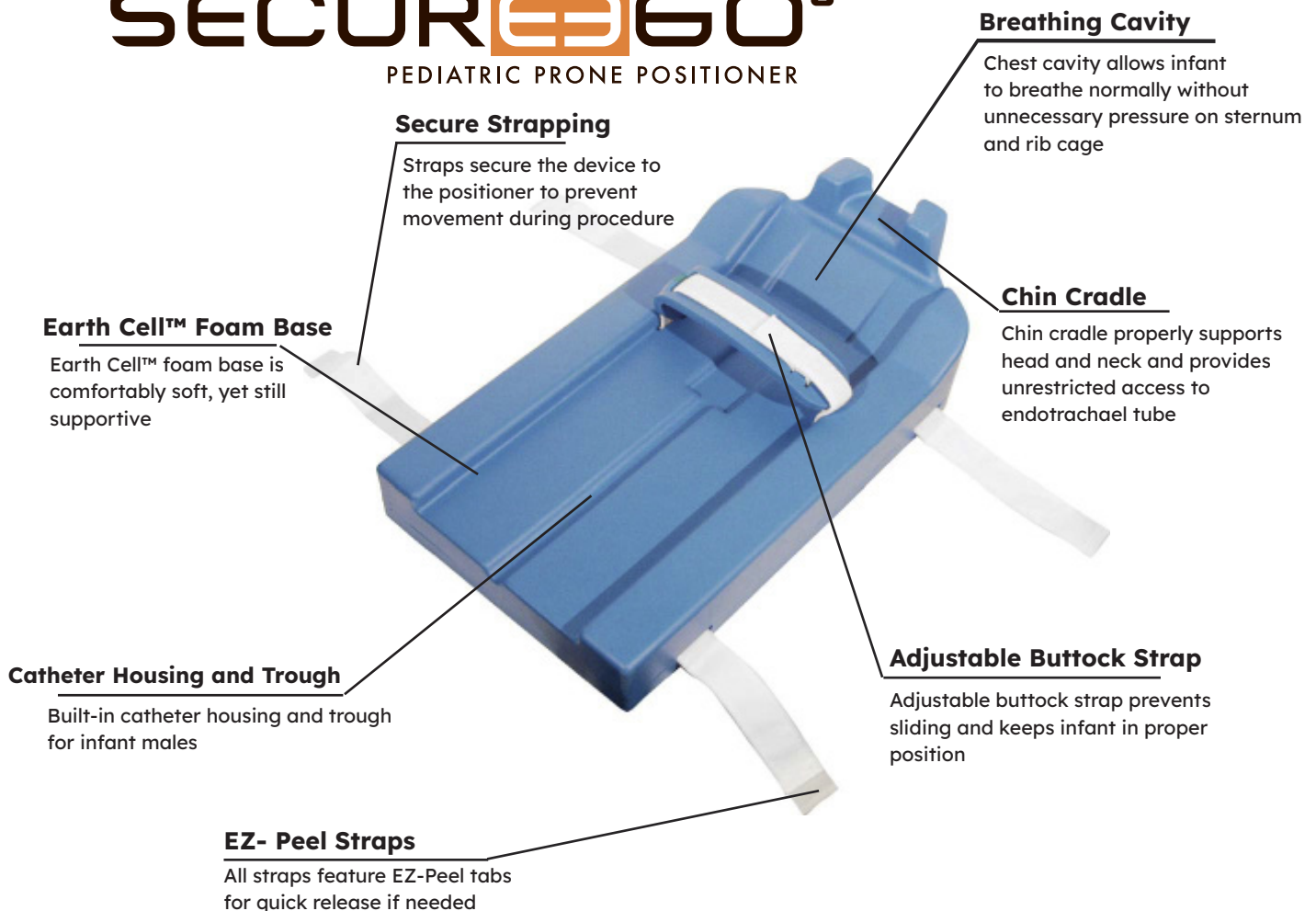
Specifically designed for use during cranial reconstruction surgeries, the Secure360 Pediatric Prone Positioner reduces patient positioning time while providing stable support throughout surgery. Allowing 360 degree access and visualization of the infant's skull.

Secure360® Pediatric Prone Positioner is indicated for use during surgery for proper positioning of infants in the prone position while maintaining maximal visualization of the skull. It is designed to provide rapid, safe and stable prone positioning while specifically protecting the infant's eyes, neck, chest and extremities

Discard after use. Flame retardant. Silicone Free. Not made with natural rubber latex.

SECURE360°

PEDIATRIC PRONE POSITIONER



Heel Protector Pair



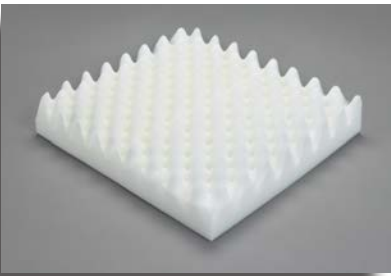
HP100

Case Pack: 36 pair

- Pair of single patient use convoluted foam heel protectors.
- Soft foam with appropriate density provides support and reduce pressure to the patient.
- Soft, wide foam straps for ease of use and patient safety.

Not made with natural rubber latex

Wheelchair Convoluted Foam Pad



WCF100

Case Pack: 12

- Single patient use foam pad for patient positioning in shoulder procedures utilizing a beach chair, as well as pressure reduction during wheelchair transportation.
- Soft foam with appropriate density provides support and reduced pressure to the patient.

➤ Dimensions: 9 cm x 41 cm x 46 cm.

Not made with natural rubber latex

Jackson Table Rail Pads



JTRP100

Case Pack: 10 sets

- Single patient use set of rail pads (2-51 cm pads, 2-15 cm pads), compatible with most spine tables.
- Tear-off sections allow for adjustability in the length of the pads to accommodate various patient body habitus.

Not made with natural rubber latex

Adult Donut



AD9

Case Pack: 36

- Single patient use 23 cm x 5.08 cm donut for anesthesia positioning.
- Soft foam with appropriate density provides support and reduced pressure to the patient.

Not made with natural rubber latex

Rolled Foam Positioners

RFP100

Case Pack: 12



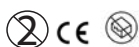
- Single patient use 43 cm x 12 cm foam roll for a variety of patient positioning options.
- Soft foam with appropriate density provides support and reduced pressure to the patient.

Not made with natural rubber latex

McGuire Positioner Pad System

MPPS100

Case Pack: 10 sets



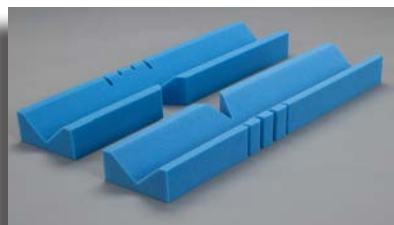
- 4 piece single-patient use pad set for McGuire lateral positioning system.
- 2 anterior pads for adjustable arms, 1 posterior pad and 1 hip pad with peel-away adhesive for additional stability.

Not made with natural rubber latex

Laminectomy Arm Cradle Set

LAC100

Case Pack: 20 sets



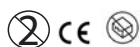
- Set of 2 laminectomy arm cradles reduce pressure at bony prominences and decrease risk of pressure ulceration, dimensions 61 cm x 12.7 cm x 7.6 cm.
- Allows for optimal patient positioning.
- Also used in conjunction with arm-tucking during robotic-assisted Trendelenburg positioning cases for protection of ulnar nerve and stability of the arms.

Not made with natural rubber latex

Patient Safety/Body Straps

SS100 /SS50

Case Pack: 25 Sets/50 Sets



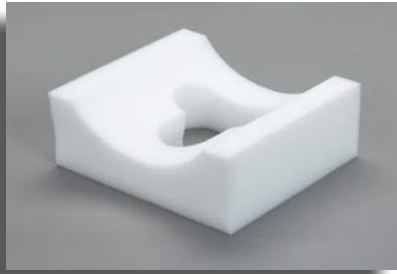
- Soft safety / body straps for use with O.R. table rails in a wide variety of patient positioning scenarios. (SS50 - single strap; SS100 - set of 2 straps).
- Single patient use straps accommodate all body types.
- Two-piece strap, 7.6 cm x 183 cm.

Not made with natural rubber latex

Adult Head Cradle

HC100

Case Pack: 36



- Single patient use head cradle for anesthesia positioning, dimensions 23cm x 20cm x 10cm.
- Soft foam with appropriate density provides support and reduced pressure to the patient.

Not made with natural rubber latex



Perineal Post

PPOST100

Case Pack: 40



- Relieves pressure in the perineal area during orthopedic fracture cases requiring mechanical traction.
- Single patient use pad provides ease of use and reduced risk of cross contamination.
- 30.5cm x 9cm

Not made with natural rubber latex



Perineal Post

PPOST6

Case Pack: 12



- Relieves pressure in the perineal area during orthopedic fracture cases requiring mechanical traction.
- Single patient use pad provides ease of use and reduced risk of cross contamination.
- 23cm x 15cm

Not made with natural rubber latex



Peg Board Covers

PC100

Case Pack: 6 Sets of 6 Covers



- Single patient use set of 20.3 cm peg board covers for use with peg boards during lateral positioning.
- Soft foam with appropriate density provides protection and reduced pressure to patient.

Not made with natural rubber latex



Prime Medical, LLC's Global Headquarters is located in Knoxville, TN, and all of our patient positioners are proudly made in the USA.





CLINICALLY DRIVEN INNOVATION

Prime Medical, LLC
1410 E Weisgarber
Knoxville, TN 37909
877-434-2021

No Prime Medical, LLC products are made with natural rubber latex.



To Order:

Email : orders@primemedicalllc.com
Fax : 877-434-2021

Additional Information:

Website:
www.primemedicalllc.com

Information requests:
info@primemedicalllc.com

Customer Service:
customerservice@primemedicalllc.com
or 877-434-2021, prompt 2